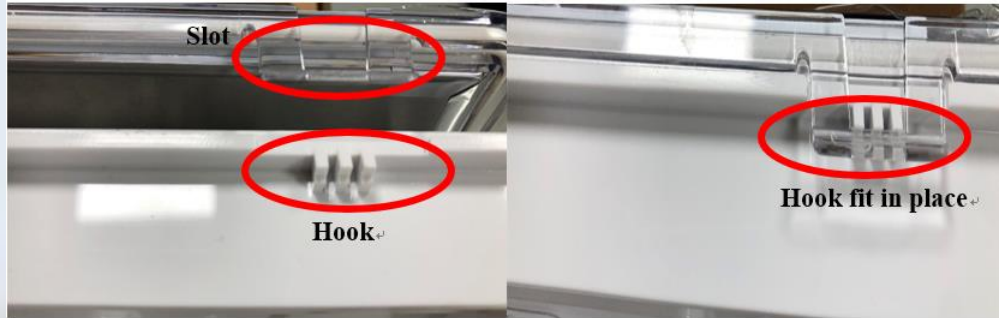




5. Align and fix the top and bottom enclosure together. There are total six snap-in locks for use. Close each slot/hook pieces together. Check each hook piece correctly placed.



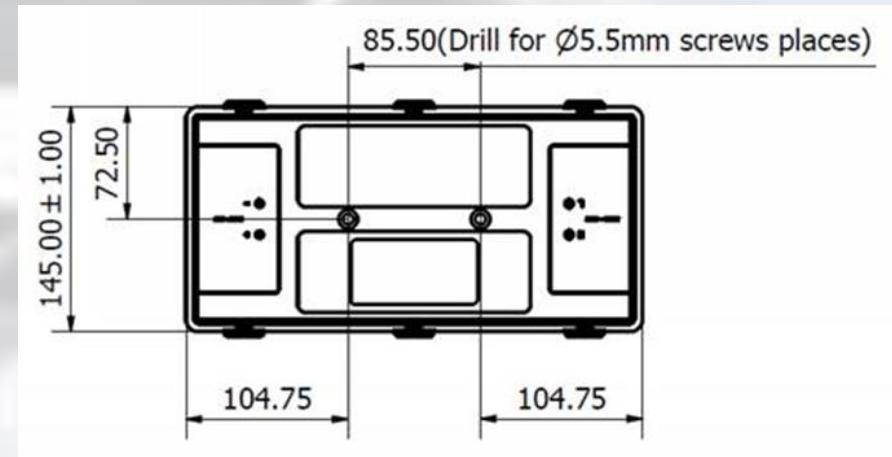
6. Peel off the protective shrink wrap after installation work completed.



## Installation Instructions

- a) Mounting places

Unit: m/m



Reserve fixture clearance/space per drawing illustrated  
Drill two mounting (screw) holes at dia. 5.5mm

Note:

Depending on power wires entering location, the wire through holes may need to be reserved. For example of rear cabling connection, the wire through holes need to be cut on the same mounting surface.

# Installation Instructions

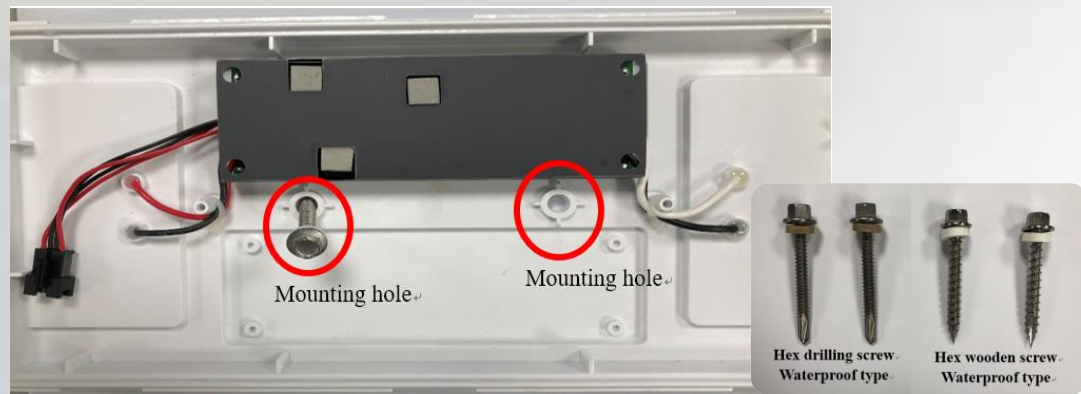
## b) Wiring and Enclosure assembly

1. Prepare AC100~240V power supply source, and connect to the bottom case of N (white) wire and L (black) wire respectively.  
Prepare DC 12~24V power source for connecting its output (+) with red wire and its output (-) with black wire.  
Refer to the picture below.

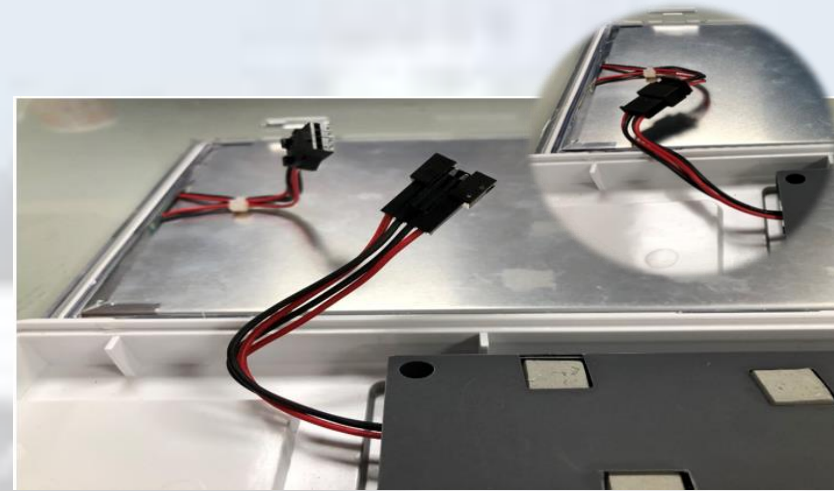


Installation work must be performed by qualified persons.  
Avoid shock hazard, disconnect all electricity supply with the unit before conducting installation work.

2. Depending on installation location, apply suitable waterproof self-tapping screws.  
Firmly fasten the selected screws into the mounting holes.



3. Align and attach connectors of the LED lighting unit and the power driver unit.  
Make sure they are tightly connected without any loose contact.



4. Make sure waterproof gasket well fit in place before putting on the top cover

